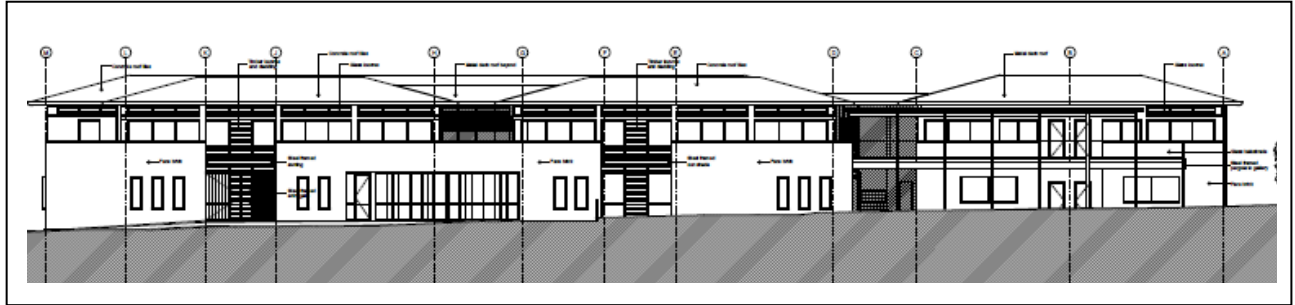




**Project: Prouille Primary School**



**Project Description**

Prouille School is a Catholic primary school in Wahroonga founded in 1950. KAE provided the Mechanical, Electrical and Hydraulic services design for the new re-built school.

**Scope of Services**

Mechanical services provided consisted of new Air Conditioning, Heating & Ventilation and exhaust systems for the Kitchen, Bathroom/Change room and car park as well as air conditioning to all areas.

Electrical services design involved new substation and main switchboard works, power, lighting, security, fire detection and communications including MATV to suit the school criteria.

Hydraulic services design involved the supply and installation of a fast response sprinkler system including all associated pumps, valves, pipework and equipment. Fire protection systems were also provided.