



Project: Universal Childcare – Little Dove

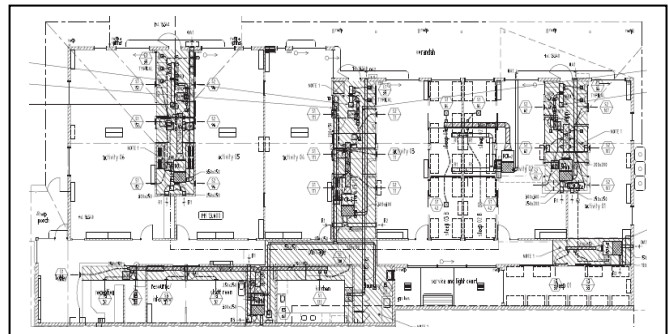
Project Description

KAE was engaged by Universal Childcare to undertake the building services consultancy for several of their Little Dove childcare centres around Sydney.

Scope of Services

Little Dove, Fairlight

This project was for a new centre which spanned across two levels; one higher level and one open, lower level. Mechanical and Electrical design services were provided as below:



Mechanical

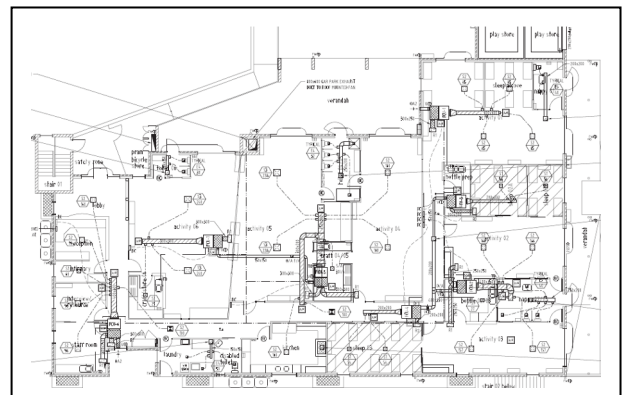
- Air conditioning
- Ventilation for Kitchens, Toilets, Garbage rooms, miscellaneous areas and car park

Electrical

- Power and Lighting
- Security
- Fire detection
- Communications including TV system.

Little Dove, Freshwater

Mechanical and Electrical services were designed for the Freshwater project. The site was a new one level childcare centre with an underground car park.



Mechanical

- Air conditioning
- Ventilation for Kitchens, Toilets, Garbage rooms, miscellaneous areas and car park

Electrical

- Power and Lighting
- Security
- Fire detection
- Communications including TV system.



Project Data Sheet

EDUCATION

Environmental | ESD | Air | Power | Noise | Structure

Little Dove, Monavale

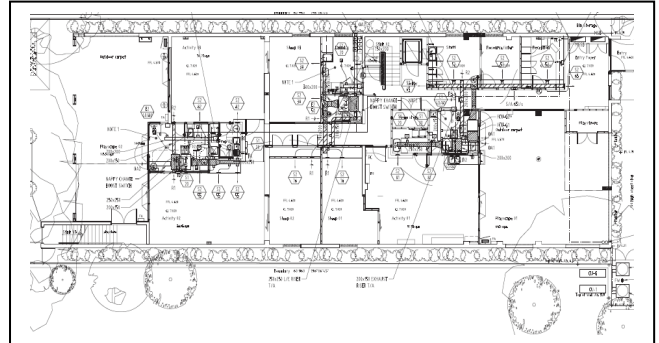
The Monavale project was for an existing building being converted to a child care centre. KAE provided the Mechanical and Electrical design services.

Mechanical

- Air conditioning
- Ventilation for Kitchens, Toilets, Garbage rooms, miscellaneous areas and car park

Electrical

- Power and Lighting
- Security
- Fire detection
- Communications including TV system.



Little Dove, Mosman

Mechanical, Electrical and Lift consultancy services were provided for the Mosman site. This project was a new child care centre with outdoor play space and outdoor drop off parking.

Mechanical

- Air conditioning
- Ventilation for Kitchens, Toilets, Garbage rooms, miscellaneous areas and car park

Electrical

- Power and Lighting
- Security
- Fire detection
- Communications including TV systems.

Lift

- Lift services.

