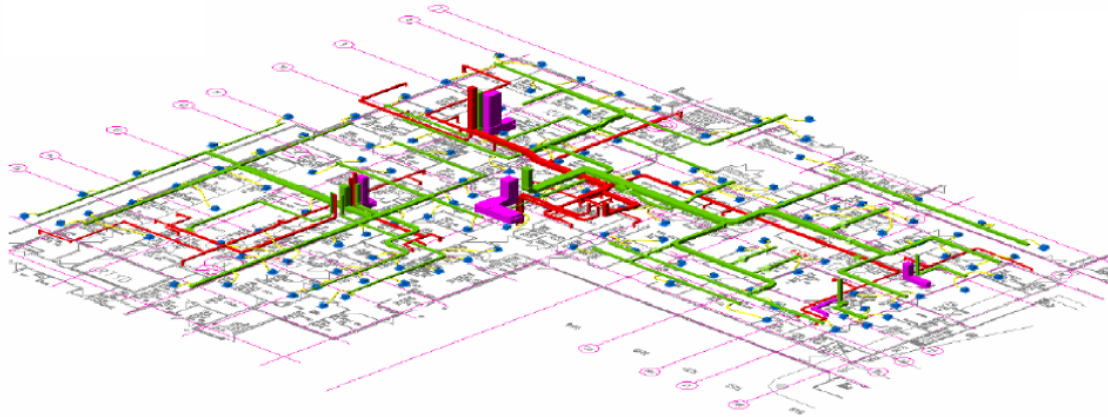




Environmental  
ESD  
Air  
Power  
Noise  
Structure

## Project: Bathurst Health Campus



### Description:

This major new hospital development (circa \$100m) planned at the Bathurst Health Campus includes a 150 bed, 16,000 sq m, new build public hospital, incorporating the following departments: Operating Theatres, Intensive Care & High Dependency Units, Medical Imaging, Emergency, Obstetrics, Medical & Surgical in-Patient Accommodation, Mental Health Unit, Outpatient and Community Services.

### Services provided:

As part of the Bovis Lend Lease Design & Construction Bid Team, KAE undertook detailed design and tender documentation for mechanical and electrical services, hydraulics, fire & medical gas services (via specialist sub-consultants). Detailed design drawings and specifications for all services were prepared in a 6 week period for BLL to undertake market pricing and achieve a high level of certainty in its GMP. In addition KAE was instrumental in proposing a number of innovations to add value to the health department's base design.

### Value Add:

- Proposed relocation of the central chilled water plant room and main electrical switch room to achieve a much improved alignment with vertical services risers and deliver significant LCC savings.
- Replanning of kitchen and waste handling ventilation systems to achieve a more efficient design with enhanced maintainability.
- Feasibility of adopting an innovatory waste handling system incorporation pneumatic pipe work reticulation and sorting system.
- Feasibility of adopting an innovatory chilled ceiling air conditioning system.